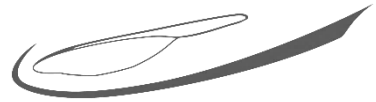


# BoxElder Helicopter Systems



## BoxElder Bracket

1

Unscrew the pivot thumb-nut

2

**Note:**  
That the pivot screw has a stop feature that only allows the thumb-nut to unscrew to a certain position so that it cannot detach and get lost.

3

Pivot the bracket screw to the open position

4

Push and Clip the bracket on the cyclic Cross-bar

5

Pivot the bracket screw to the closed position

6

Screw the pivot thumb-nut

Adjust the thumb-nut tightness so that the bracket can turn with some effort but not with normal helicopter vibrations.

7

The Bracket should be able to move slightly with noticeable effort.

**Note:** Do not over tighten the thumb-nut. Only light pressure is required to secure the bracket.

8

You can adjust the bracket in any angle for Flight.

# BoxElder Helicopter Systems



READ ALL INSTRUCTIONS AND WARNINGS BEFORE INSTALLING AND OPERATING YOUR HELICOPTER WHILE USING THIS DEVICE



## **WARNING!**

*Do not adjust, remove or manipulate this device while in flight!*



## **WARNING!**

*Small plastic parts. Do not leave with children younger than 3 years old unattended!*



## **WARNING!**

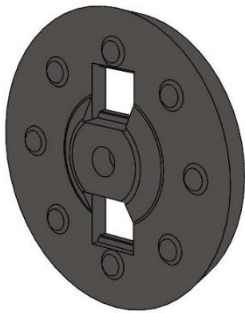
*Strong Magnetic Field. Keep more than 18 inches away from compass!*



## **WARNING!**

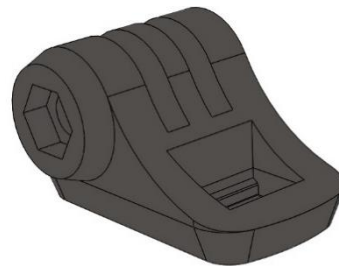
*Never attach more than 6oz of weigh at any point on the cyclic crossbar!*

## Other BoxElder Products

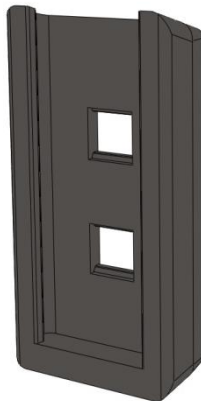


**ASA Aviation  
Timer Mounting  
Accessory**

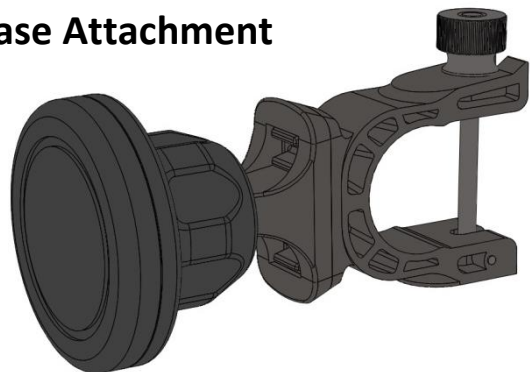
**GoPro Camera Base  
Attachment**



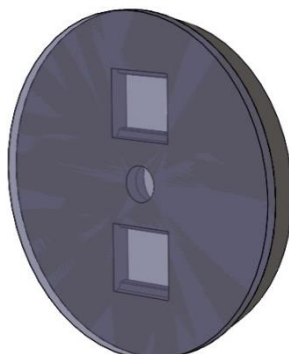
**Sporty's Aviation  
Timer Mounting  
Plate**



**Magnetic Swivel  
Base Attachment**



**Universal 1.5"  
Disc with double  
sided tape or  
Velcro**



### Custom Mounting Devices

We develop and manufacture custom mounting plates for a variety of applications. If your solution is not available, please contact us and we will discuss a possible solution to your problem

[info@BoxElderHS.com](mailto:info@BoxElderHS.com)

Tel: 631-508-3286